

# Therapeutic signposts: using biomarkers to guide better treatment of schizophrenia and other psychotic disorders

Richard Banati and Ian B Hickie

In clinical medicine, useful biomarkers indicate individual variation in illness severity, response to treatment, illness course or cumulative illness burden. The total illness burden reflects more than just premorbid risks (eg, single or multiple genetic factors, intrauterine or early developmental insults). Longitudinally, it includes factors acquired because of the persistence of the illness.

Here, we argue that these post-illness factors should be the focus of biomarker research in neuropsychiatry. These biomarkers may be particularly informative about ongoing pathophysiology that causes secondary progressive illness and may be amenable to therapeutic intervention. For patients with schizophrenia and other psychotic disorders, such biomarkers are likely to include measures of cognitive or perceptual dysfunction and other measures of disconnected neural circuits and dysregulated glucocorticoid, neuroimmune or circadian systems (Box 1). We describe the conceptual development of a biomarker index (the Brain and Mind Research Institute [BMRI] Biomarker Index) for prediction of disability associated with schizophrenia and other psychotic disorders (Box 2).

## Linking biomarker development to the clinical staging model

The staging system<sup>4</sup> for the major psychiatric disorders provides a novel clinical framework for the evaluation of biomarker utility. This system proposes a developmental perspective best described as a “trunk-and-branch” model. It postulates that the early stages of schizophrenia, psychotic depression and bipolar disorder present with a generic phenotype, dominated by non-specific features (including depression, irritability, odd thoughts, inattention, cognitive impairment, circadian rhythm disturbance, social withdrawal, anxiety and periodic agitation).

The model proposes that this undifferentiated phenotype is the consequence of one or more common pathophysiological mechanisms acting during the post-pubertal phase of brain development. We predict that, during this key life phase, common biological

## ABSTRACT

- We propose that various measures of brain structure or function, gene expression and proteomic technologies can be used to guide better treatment of schizophrenia and other psychotic disorders.
- These measures are not used to establish a specific diagnosis. Their purpose is to predict variations in underlying illness activity that predict severity, course of clinical illness, or other morbidity.
- We propose a new instrument that uses a composite scoring system of systemic biomarkers of illness-related changes in health status: the Brain and Mind Research Institute Biomarker Index. This may permit comparison of biological dysfunction among patients who are at similar points in their illness or have similar clinical features.
- A specific example of the use of a novel positron emission tomography marker of progressive brain disease in patients with schizophrenia is described.

MJA 2009; 190: S26–S32

perturbations are of key relevance (eg, central corticotropin releasing factor resistance, disturbed circadian function, abnormal patterns of synaptic pruning, dysregulated central neuroimmune function, and reduced production of brain-derived neurotrophic factor [BDNF]).

Biomarkers are likely to be of greatest relevance in the early stages of illness. Ideally, they would have the capacity to:

- record the current degree of perturbation in key neurobiological systems, assuming that such markers can be used over time as direct or proxy measures of treatment response;
- predict the extent of likely response to specific or non-specific interventions (ie, guide treatment selection); or
- predict progression to more distinct illness types (eg, schizophrenia or bipolar disorder).

## 1 Properties of biomarkers that would be of clinical use in schizophrenia and other psychotic disorders

- **Diagnostically non-specific.** Biomarkers should not be assumed to be specific only to schizophrenia as defined by the *Diagnostic and statistical manual of mental disorders*, 4th edition or the International classification of diseases, 10th revision. The same marker may be a useful biological predictor of health status in other psychoses, bipolar disorder, severe depression or other neuropsychiatric disorders.
- **Quantitative.** Variables that relate directly to the functioning of the person with schizophrenia, including continuous measures of cognition, sleep–wake cycle and other circadian phenomena, metabolism, cardiovascular function or immunological function.
- **Longitudinal.** Simple cross-sectional measures are typically less informative than measures that vary over time — presumably in association with state of illness or during critical periods of brain

development over time (eg, higher-order cognitive functions during late adolescence).

- **Plausibly linked to underlying pathophysiology.** Biomarkers reflect organicity; that is, they relate to active brain changes in association with changes in illness status (eg, decrements in regional brain volumes or evidence of microglial activation) or changes in the central nervous system secondary to other disturbances, such as subtle changes in metabolic or nutritional homeostasis.
- **Predictive of risk of impairment.** That is, each measure adds significantly to a general model that explains individual increases in disability. Although current risk factors are each of low predictive value, if each is tapping a different aspect of pathophysiology, together they will help to explain the variance in outcome or response to treatments between individuals with similar clinical phenotypes. ♦

## Using multiple biomarkers

Although pathophysiological processes are not yet well defined for the major psychoses, it is clear that the onset period is correlated with the critical late phase of synaptic pruning, particularly within the frontal lobes (see Bennett in this supplement, *page S14*).<sup>5</sup> Recent brain imaging studies indicate active brain changes during this period of illness (see Wood and colleagues in this supplement,<sup>6</sup> *page S10*).<sup>7</sup> As in other areas of child and adolescent development, abnormal processes are best defined by trajectories (ie, altered patterns of measurement over time), rather than single-point measurements. Additionally, the integration of several indirect measures may be more revealing than single indices.

One particularly important issue is whether we can expect to detect greater biological variance between individuals with similar clinical phenotypes in earlier illness stages. The variance in the biomarker might then relate to the differences in disease trajec-

ories (ie, disease prognosis, irrespective of the diagnosis at the time). The critical issue is whether any such measurements (eg, regional brain atrophy on structural magnetic resonance imaging [MRI],<sup>8</sup> decreased smell differentiation,<sup>9</sup> or increased uptake of positron emission tomography ligands [eg, peripheral benzodiazepine receptor (PBR) or PK-11195],<sup>10</sup> indicative of microglial activation secondary to local or distant neuronal disconnection) reflect more severe or longstanding pathophysiological processes.

## Guiding treatment selection in early phases of illness

Of greatest clinical importance is the potential role of biomarkers in guiding treatment selection. For example, reduced plasma levels of BDNF may indicate the need to use medications (eg, antidepressants or second-generation antipsychotics) that have been demonstrated to increase these levels.<sup>11</sup> Similarly, circadian markers of delayed sleep-phase syndromes may be used to guide behavioural

### 2 The Brain and Mind Research Institute (BMRI) Biomarker Index: cumulative and longitudinal risks for assessing psychotic disorders

Objective measures (examples of each domain are given)	Absent = 0	Present = 1	Severe = 2
1. Neuropsychology	0	1	2
a. Working memory			
b. Executive dysfunction			
2. Structural imaging	0	1	2
a. Magnetic resonance spectroscopy			
b. Cortical grey matter			
c. White matter changes			
3. Functional imaging	0	1	2
a. Functional magnetic resonance imaging			
b. Novel positron emission tomography ligands			
4. Electrophysiology	0	1	2
a. Cortical evoked potentials (eg, mismatch negativity)			
5. Circadian function	0	1	2
a. Altered sleep phase (based on actigraphy or melatonin-based measures)			
6. Glucocorticoid function			
a. Serum cortisol			
b. Dystonin (DST) non-suppression			
c. 24-hour urinary free cortisol			
7. Inflammatory or immune markers	0	1	2
a. Impaired cell-mediated immune response (eg, delayed-type hypersensitivity) <sup>1</sup>			
b. C-reactive protein and other peripheral blood markers of inflammation			
c. Cytokine profiles indicative of neuroinflammation (eg, T helper cells 1 and 2) <sup>2</sup>			
8. Pharmacogenomic profiles	0	1	2
a. QT prolongation determined by electrocardiography			
9. Olfactory dysfunction	0	1	2
a. Smell-discrimination tests			

- The BMRI Biomarker Index proposes that a simple additive approach, incorporating specified cutoffs for severity on various quantitative measures, is a better predictor of overall disability and premature mortality than standard symptom-based measures.
- Putative new measures can be added to the model and evaluated against their capacity to increase the overall predictive capacity.
- The tool includes specific measurements of key regulatory systems (eg, altered immune status), but does not promulgate causal speculations (eg, a purported imbalance between innate and acquired immunity as a primary cause).<sup>3</sup>
- Although the whole instrument is not designed with reference to existing datasets, it is structured so that the utility of summing across several common domains (neuropsychology, structural and functional neuroimaging, electrophysiology) can be explored immediately. ♦

### 3 Example of use of a novel PET biomarker of progressive brain disease in patients with schizophrenia

**Introduction:** The activation of microglia is an early response to neuronal damage even in the absence of neuronal cell death. The transition of microglia from the normal resting to the activated state is associated with an increased expression of peripheral benzodiazepine binding sites (PBBSs). Thus, the upregulation of PBBS is a measure of disease activity. (R)-PK11195 is a specific ligand for the PBBS that, labelled with carbon-11, can be used for positron emission tomography (PET).

**Methods:** In this exploratory study, mismatch negativity (MMN) to frequency and duration deviants was recorded from 32 electrodes in 16 (10 male; six female) patients with schizophrenic psychosis and without tardive dyskinesia (mean age, 39.4 years [SD, 2.7 years]; range of disease duration, 3–360 months) and eight age-matched controls (mean age, 37.6 years [SD, 5.4 years]). [11C](R)-PK11195 PET was performed and regional binding potential (BP) calculated as reported previously (Cagnin et al, 2000; Banati, 2002; Hirsch, 2004).

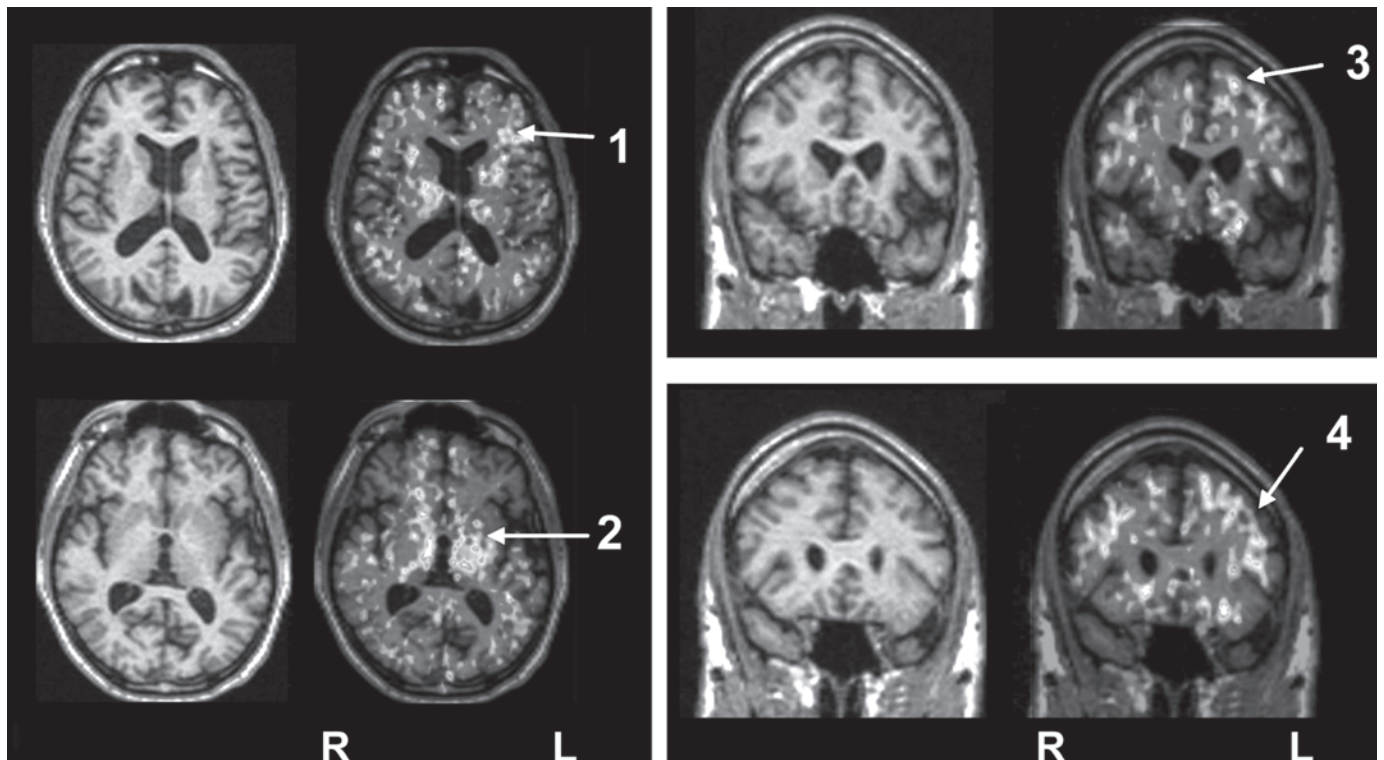
Statistical analysis of the regional BP was carried out using univariate and multivariate testing. Univariate analysis: Student's *t* test (two samples unequal variance, one tail) to test for increase in BP in the disease group. Multivariate analysis: principal component analysis (PCA) of the covariance matrix of the overall dataset (controls and disease group) of BP values (Moeller and Strother, 1991; Strother et al, 1995). The contribution of each region to an eigenvector is labelled as the PC regional load, and the contribution of each subject to an eigenvector is defined as the PC subject load. The significance of a region's contribution to the amount of variance explained by an individual eigenvector was determined by the "Gap" test (Tibshirani et al, 2001). Group effects on each pattern were then tested by application of the Student's *t* test (two samples unequal variance, one tail) to the PC subject loadings (Moeller and Strother, 1991; Strother et al, 1995). Similarly, PC subject loadings were used to detect correlation of each pattern with clinical scores. Laterality of the effect was tested with the paired Hotelling *T*2.

**Results (see Figures 1 and 2):** Results of univariate analysis (*t* testing for increases) revealed that, of 28 regions, 15 have  $P < 0.05$  significance. This suggests a quite extended pattern of increased BP values in the diseased group. The increase in binding was more marked on the right side ( $P = 0.0005$ ). Multivariate analysis of the same data confirmed the result. PCA extracted one main eigenvector (53% of the total variance explained) with significant contributions from a large number of regions. Subject loading for the same principal component showed that the six out of 16 patients did not contribute differently to the PC loading compared with control individuals. The result of *t* testing for a group effect on this pattern of regions was significant ( $P = 0.0023$ ). This pattern showed a significant correlation with the MMN amplitude scores ( $r = 0.72$ ;  $P = 0.0037$ ). None of the results covaried with age, sex, disease duration, or the scores of the Scales for the Assessment of Positive/Negative Symptoms.

**Conclusions:** The in-vivo detection of increased [11C](R)-PK11195 binding in schizophrenic psychosis indicates:

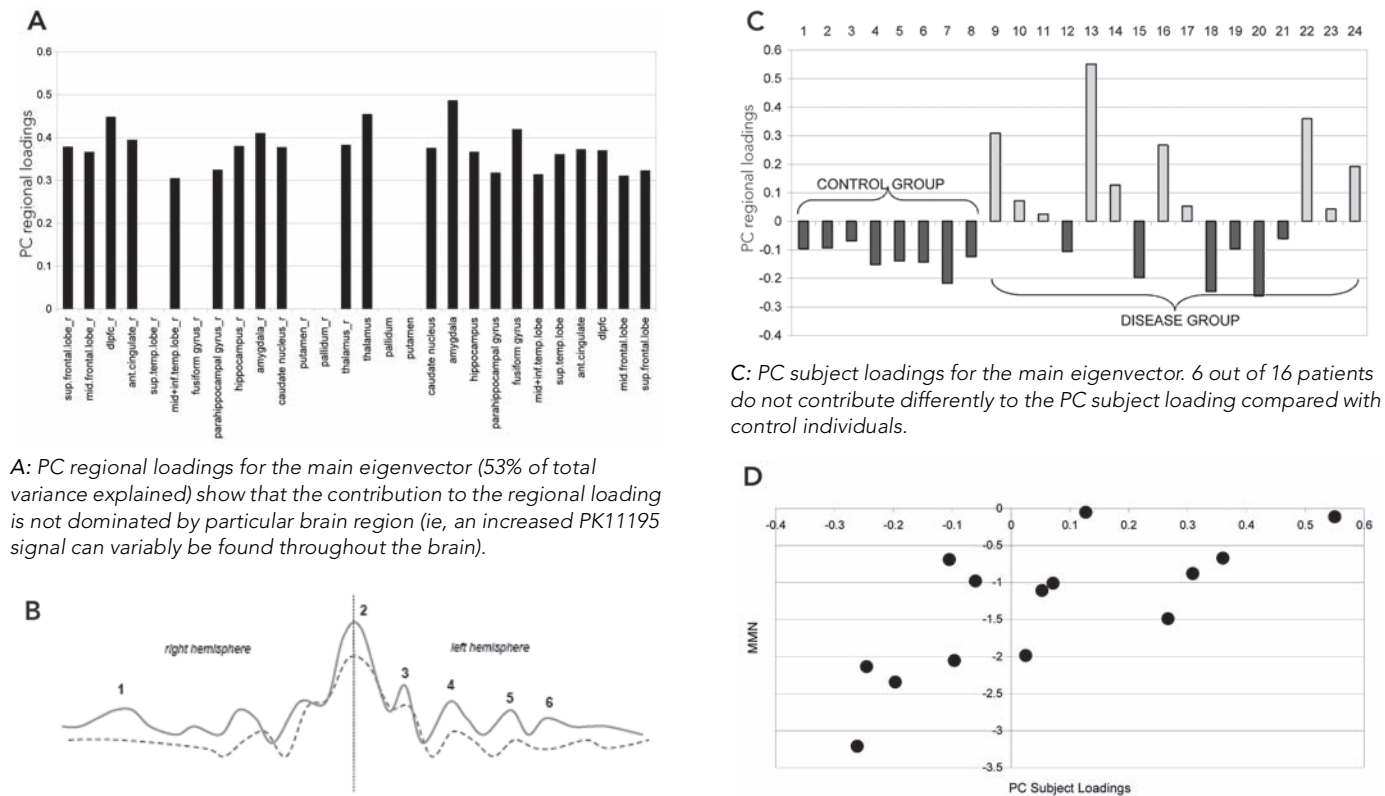
- (a) a widely distributed low-grade signal that is not narrowly localised to one region of the brain (ie, no single region distinguished patients from healthy controls);
- (b) higher [11C](R)-PK11195 binding is associated with more severely impaired MMN. The latter may suggest that impaired MMN provides a measure reflecting the disease state (ie, actively progressing, and the degree of subtle overall tissue pathology [rather than its anatomical location]).

The cellular nature of the signal is yet to be established, but by inference from other brain diseases where increased PK11195 binding has been reported, would be expected to be in activated glial cells. Neither impaired MMN nor increased PK11195 binding are disease-specific, however, they are closely correlated.



**Figure 1.** A PK11195-PET scan overlaid onto a T1-weighted MRI in a patient with chronic schizophrenia (male, aged 57 years, disease duration: 264 months). 1: White matter tract to the left frontal lobe. 2: Thalamus. 3: Left middle/superior frontal gyrus. 4: Left frontotemporal region. R = right. L = left.

**Figure 2.** The statistical data on the PK11195 signals found in different brain regions, including any contribution made by an individual patient with the diagnosis of schizophrenia to the observed significant increases of the regional brain signals (A). Six out of 16 patients did not contribute (ie, differently to the PC subject loading) to the observation of regionally increased brain signals compared with control individuals. Hence, the diagnosis of schizophrenia is not a good predictor of pathological changes in the brain. However, a diagnosis of schizophrenia and the presence of abnormal MMN amplitude scores closely correlates with the presence of abnormal retention of PK11195, albeit without any preferential localisation to any particular brain region (D).



**B:** Simplified representation of the differences in the overall binding of PK11195 (dashed line: control group; solid line: patient group). The PK11195 signal distribution across all investigated individuals indicates that, as a group, patients with the diagnosis of schizophrenia can have signal increases in many brain regions. Individually, however, patients may have discrete distributed signal patterns rather than a global increase in all brain areas (Figure 1 and 2C, D), with some patients having no significant signal increases at all.

1: Dorsolateral prefrontal cortex, anterior cingulate. 2: Thalamus. 3: Putamen. 4: Hippocampus. 5: Fusiform gyrus. 6: Superior frontal gyrus.

**D:** The PK11195 binding pattern showed a significant correlation with the MMN scores ( $r = 0.72$ ,  $P = 0.0037$ ). The presence of abnormal MMN amplitude scores correlates with the presence of abnormal retention of PK11195 in 10 out of 16 patients whereby the regional distribution (see B) can be variable.

#### References:

- Banati RB. Visualising microglial activation in vivo. *Glia* 2002; 40: 206-217.
- Cagnin A, Brooks DJ, Kennedy AM, et al. In-vivo measurement of activated microglia in dementia. *Lancet* 2001; 358: 461-467.
- Hirsch S. Clinical changes measured by [11C](R)-PK11195 PET in patients with psychosis and cognitive decline are associated with impaired event related potential mismatch negativity (abstract from the 12th Biennial Winter Workshop on Schizophrenia, Davos, Switzerland). *Schizophr Res* 2004; 67 Suppl: 103.
- Moeller JR, Strother SC. A regional covariance approach to the analysis of functional patterns in positron emission tomographic data. *J Cereb Blood Flow Metab* 1991; 11: A121-A135.
- Strother SC, Anderson JR, Schaper KA, et al. Principal component analysis and the scaled subprofile model compared to intersubject averaging and statistical parametric mapping: I. "Functional connectivity" of the human motor system studied with [15O]water PET. *J Cereb Blood Flow Metab* 1995; 15: 738-753.
- Tibshirani R, Walther G, Hastie T. Estimating the number of clusters in a data set via the gap statistic. *J R Stat Soc Ser B* 2001; 63: 411-423.

**Acknowledgement:** RB Banati, S Hirsch, S Krjles, FE Turkheimer.

and pharmacological interventions to correct these phenomena. Peripheral blood markers of immune activation may indicate the need for immunomodulatory therapies. Again, the main research goal here is to demonstrate that changes in such measures through active interventions correlate with short-term clinical response and/or non-progression to later phases of illness.

### Biomarkers in later stages of illness

We assume that as the pathophysiological changes of major psychiatric illnesses progress, more distinct clinical features (eg, hallucinations, delusions, manic episodes or cognitive deterioration) emerge. This model suggests that this later differentiation may result from a progressive accumulation of earlier (ie, genetic predisposition, intrauterine infection, early childhood abuse, childhood infection or brain trauma) or later (eg, alcohol or other substance misuse, infection or psychosocial trauma) risk factors. Further, we propose that later phenotypes will be accompanied by biological correlates of these later or progressive pathophysiologies (eg, hippocampal atrophy, frontal lobe atrophy or altered dopamine 2 receptor function).

The principal purpose of biomarkers in later illness phases is the accurate measurement of persistent pathophysiological mechanisms. At the individual level, we propose that such measures can function as direct or proxy measures of treatment response. At these later stages, individuals are more likely to have phenotypes (“branches”) that can more reasonably be described as schizophrenia, bipolar disorder or psychotic depression. Consequently, some of the relevant measures may be linked more tightly with the evolved clinical phenotypes. At this later stage, circadian, glucocorticoid and neuroinflammatory measures may be more relevant to individuals with bipolar disorder or severe depression,<sup>12,13</sup> whereas measures of ongoing cognitive deterioration or global or regional brain atrophy might be more relevant to those with schizophrenia and persistent delusional disorders.<sup>6</sup>

### Biomarkers of general health

Many of the most useful tests in medicine (blood glucose, blood pressure, blood lipids and lipoproteins, fever, and inflammatory markers) are not informative of exact aetiology. Instead, they reliably describe the current state of the pathogenic mechanism that is causing current functional impairment or disease progression. It is arguably more useful to have biomarkers that reflect such dose–effect variations in the consequences of illness than those that aid diagnostic classification. We propose that another area of biomarker research that should be prioritised is that of biological stress markers, similar to those used in other multifactorial medical conditions. In this scenario, the psychotic episode is a stressor initiating or promoting illness pathways that result in all-cause morbidity and premature mortality.<sup>14–16</sup>

The BMRI Biomarker Index (Box 2) incorporates biological indicators of stress and general health. The choice of biomarkers in our cumulative index is solely dictated by their prognostic power related to impeding and evolving disability risk. This change in research priority (ie, away from diagnostic specificity) acknowledges two major objections to biomarker development, namely irrelevance to the patient and the risk of misuse.<sup>17</sup> Such considerations are already evident to those who have pursued markers of genetic risk or heritability.

### Endophenotypes are unlikely to have clinical applications

Biomarker research using proteomic and transcriptomic profiling of diseases (eg, leukaemia,<sup>18</sup> inflammatory bowel disease,<sup>19</sup> and psychiatric illness<sup>20,21</sup>) indicates that extensive phenotyping and covariation with gene or gene-product clusters can yield valuable information (eg, special gene subsets for certain disease forms). In psychiatry, however, it is uncertain whether the tenuous associations between genotype and phenotype<sup>22–28</sup> actually lend themselves to such a broad profiling approach. Further, there remains the issue as to whether endophenotypes should be seen as illness states below the threshold level of clinical detectability. As explanatory, quasidiagnostic entities, they convey a perception of fixed pre-established risk at the expense of more analytical monitoring of changing risk in individuals over time.

### Magnetic resonance imaging techniques

Recently, a range of brain imaging measures have seemingly bridged the divide between cognitive or emotional function and cerebral localisation. In schizophrenia and other psychotic disorders, regions such as the anterior cingulate cortex and dorsolateral prefrontal cortex have been emphasised.

Thus far, MRI-based measures have mostly reported group comparisons, rather than providing data about variation between individuals. Statistical parametric approaches have dominated analyses, and frequently report statistical variance patterns (ie, activation of specific brain regions) that essentially reflect prior assumptions of the psychological test paradigm or the diagnostic group definition.<sup>29,30</sup> Such functional studies are prone to circularity and selective reporting.<sup>31</sup> Although recent attempts to link the functional MRI signal with event-related electroencephalogram data may represent an advance, the approach is still conceptually bound to brain “localisationist” theories.<sup>32–34</sup>

### Recording the activation of microglia — linking normal physiology and ongoing pathophysiology

Microglia, as the main constituent of the brain’s innate immune system, respond to a wide range of signals when brain tissue is undergoing active change (during brain development or in response to illness later in life). Microglia can become activated by alterations in neuronal activity, neurotransmission or changes in broader cellular (ie, astroglial and neuronal) crosstalk.<sup>35</sup> Microglia follow some of the brain’s peculiar organisational principles; that is, they reflect the brain’s regional variation in cellular composition and functional specialisation, and show constitutive variations in their functional state, depending on the region in which they are located.<sup>36,37</sup>

Such regional variation may be linked to the well known regional selective vulnerability of the brain, whereby certain brain areas and neuronal subpopulations are selectively vulnerable to untargeted biological stressors.<sup>38,39</sup> Whether the net effect of microglial activation is harm, protection or mere surveillance of the affected brain tissue appears to depend on the overall “ecological” balance of many competing or synergistic signalling and effector pathways.<sup>40–42</sup>

As proposed earlier, the stress of psychotic illnesses that leads to decline in general health is also likely to impact negatively on brain structure and function. In turn, such prolonged perturbations may maintain microglia in a persistently reactive state. Mild forms of

such activation are unlikely to be detected by relatively insensitive histopathological and neuroanatomical techniques. Many of the currently available data on microglial activation, and related illness behaviour, are based on observations in severe or acute neurological disease states, and cannot easily be extrapolated to chronically evolving conditions, such as schizophrenia and related psychoses. However, there is now mounting evidence that microglia are highly active in the healthy brain, and appear to be modulated via regulatory mechanisms, such as steroid hormones, that are typically involved in biological stress conditions.<sup>43-45</sup>

As discussed above, illness severity and prognosis can be based on biological measures that are not diagnostically specific. In this context, disease-induced microglial activation, which has been well established, can serve as a generic marker that relates more directly to disease progression.<sup>10,46-50</sup> Preliminary studies in patients with schizophrenia suggest that microglial activation is present (Box 3) and may be correlated with other meaningful illness measures, such as (event-related potential derived) mismatch negativity.

## Conclusions

The development of biomarkers in neuropsychiatry has been hampered, not only by limited technologies, but also by an undue emphasis on promoting diagnostically specific markers or pseudo-diagnostic markers (eg, endophenotypes). These approaches have ignored longstanding questions about the construct validity of the major diagnostic entities in psychiatry,<sup>51,52</sup> and have not translated into better health outcomes for patients or their families. By contrast, there has been a lack of attention to potential markers of ongoing contributory risks, disease progression or treatment selection. In our view, the combination of new clinical staging paradigms, new technologies and the utilisation of multiple markers of ill health can now set the stage for a far more productive period of biomarker research.

## Competing interests

None identified.

## Author details

Richard Banati, MD, PhD, Professor, Chair of Medical Radiation Sciences and Director, Ramaciotti Centre for Molecular Imaging,<sup>1</sup> and Research Fellow<sup>2</sup>

Ian B Hickie, MD, FRANZCP, AM, Professor of Psychiatry and Executive Director<sup>1</sup>

<sup>1</sup> Brain and Mind Research Institute, University of Sydney, Sydney, NSW.

<sup>2</sup> ANSTO, Sydney, NSW.

Correspondence: R.Banati@usyd.edu.au

## References

- Waddington JL. Neuroimaging and other neurobiological indices in schizophrenia: relationship to measurement of functional outcome. *Br J Psychiatry Suppl* 2007; 50: s52-s57.
- Potvin S, Stip E, Sepehry AA, et al. Inflammatory cytokine alterations in schizophrenia: a systematic quantitative review. *Biol Psychiatry* 2008; 63: 801-808.
- Muller N, Riedel M, Ackenheil M, Schwarz MJ. The role of immune function in schizophrenia: an overview. *Eur Arch Psychiatry Clin Neurosci* 1999; 249 Suppl 4: 62-68.
- McGorry PD, Hickie IB, Yung AR, et al. Clinical staging of psychiatric disorders: a heuristic framework for choosing earlier, safer and more effective interventions. *Aust N Z J Psychiatry* 2006; 40: 616-622.
- Bennett MR. Synapse formation and regression in the cortex during adolescence and in schizophrenia. *Med J Aust* 2009; 190 (4 Suppl): S14-S16.
- Wood SJ, Pantelis C, Yung AR, et al. Brain changes during the onset of schizophrenia: implications for neurodevelopmental theories. *Med J Aust* 2009; 190 (4 Suppl): S10-S13.
- Pantelis C, Velakoulis D, McGorry PD, et al. Neuroanatomical abnormalities before and after onset of psychosis: a cross-sectional and longitudinal MRI comparison. *Lancet* 2003; 361: 281-288.
- Hickie I, Naismith S, Ward PB, et al. Reduced hippocampal volumes and memory loss in patients with early- and late-onset depression. *Br J Psychiatry* 2005; 186: 197-202.
- Brewer WJ, Pantelis C, Anderson V, et al. Stability of olfactory identification deficits in neuroleptic-naïve patients with first-episode psychosis. *Am J Psychiatry* 2001; 158: 107-115.
- Banati RB. Visualising microglial activation in vivo. *Glia* 2002; 40: 206-217.
- Duman RS, Monteggia LM. A neurotrophic model for stress-related mood disorders. *Biol Psychiatry* 2006; 59: 1116-1127.
- Hickie I, Hickie C, Lloyd A, et al. Impaired in vivo immune responses in patients with melancholia. *Br J Psychiatry* 1993; 162: 651-657.
- Hickie IB, Naismith SL, Ward PB, et al. Serotonin transporter gene status predicts caudate nucleus but not amygdala or hippocampal volumes in older persons with major depression. *J Affect Dis* 2007; 98: 137-142.
- McGrath J. Hypothesis: is low prenatal vitamin D a risk-modifying factor for schizophrenia? *Schizophr Res* 1999; 40: 173-177.
- McGrath J, Eyles D, Mowry B, et al. Low maternal vitamin D as a risk factor for schizophrenia: a pilot study using banked sera. *Schizophr Res* 2003; 63: 73-78.
- McGrath J, Saha S, Welham J, et al. A systematic review of the incidence of schizophrenia: the distribution of rates and the influence of sex, urbanicity, migrant status and methodology. *BMC Med* 2004; 2: 13.
- Lakhan SE. Schizophrenia proteomics: biomarkers on the path to laboratory medicine? *Diagn Pathol* 2006; 1: 1.
- Song JH, Kim H-J, Lee CH, et al. Identification of gene expression signatures for molecular classification in human leukemia cells. *Int J Oncol* 2006; 29: 57-64.
- Silverberg MS, Satsangi J, Ahmad T, et al. Toward an integrated clinical, molecular and serological classification of inflammatory bowel disease: report of a Working Party of the 2005 Montreal World Congress of Gastroenterology. *Can J Gastroenterol* 2005; 19 Suppl A: 5-36.
- Craddock RM, Huang JT, Jackson E, et al. Increased alpha-defensins as a blood marker for schizophrenia susceptibility. *Mol Cell Proteomics* 2008; 7: 1204-1213.
- Huang J, Lewke FM, Oxley D, et al. Disease biomarkers in cerebrospinal fluid of patients with first-onset psychosis. *PLoS Med* 2006; 3: e428.
- Gottesman II, Gould TD. The endophenotype concept in psychiatry: etymology and strategic intentions. *Am J Psychiatry* 2003; 160: 636-645.
- Berrettini WH. Genetic bases for endophenotypes in psychiatric disorders. *Dialogues Clin Neurosci* 2005; 7: 95-101.
- Bowden NA, Weidenhofer J, Scott RJ, et al. Preliminary investigation of gene expression profiles in peripheral blood lymphocytes in schizophrenia. *Schizophr Res* 2006; 82: 175-183.
- Cardno AG, Rijsdijk FV, Sham PC, et al. A twin study of genetic relationships between psychotic symptoms. *Am J Psychiatry* 2002; 159: 539-545.
- McDonald C, Bullmore ET, Sham PC, et al. Association of genetic risks for schizophrenia and bipolar disorder with specific and generic brain structural endophenotypes. *Arch Gen Psychiatry* 2004; 61: 974-984.
- Craddock N, O'Donovan MC, Owen MJ. Genes for schizophrenia and bipolar disorder? Implications for psychiatric nosology. *Schizophr Bull* 2006; 32: 9-16.
- Murray RM, Sham P, Van Os J, et al. A developmental model for similarities and dissimilarities between schizophrenia and bipolar disorder. *Schizophr Res* 2004; 71: 405-416.
- Turkheimer FE, Aston JAD, Cunningham VJ. On the logic of hypothesis testing in functional imaging. *Eur J Nucl Med Mol Imaging* 2004; 31: 725-732.
- Jernigan TL, Gamst AC, Fennema-Notestine C, Ostergaard AL. More "mapping" in brain mapping: statistical comparison of effects. *Hum Brain Mapp* 2003; 19: 90-95.
- Neumann J, Lohmann G, Derrfuss J, von Cramon DY. Meta-analysis of functional imaging data using replicator dynamics. *Hum Brain Mapp* 2005; 25: 165-173.

- 32 Uttal WR. The new phrenology: the limits of localizing cognitive processes in the brain. Cambridge, Mass: MIT Press, 2001.
- 33 Van Orden GC, Pennington BF, Stone GO. What do double dissociations prove? *Cogn Sci* 2001; 25: 111-172.
- 34 Donaldson DI. Parsing brain activity with fMRI and mixed designs: what kind of a state is neuroimaging in? *Trends Neurosci* 2004; 27: 442-444.
- 35 Bennett MR. Development of the concept of mind. *Aust N Z J Psychiatry* 2007; 41: 943-956.
- 36 de Haas AH, Boddeke HW, Biber K. Region-specific expression of immunoregulatory proteins on microglia in the healthy CNS. *Glia* 2008; 56: 888-894.
- 37 Mittelbronn M, Dietz K, Schluesener HJ, Meyermann R. Local distribution of microglia in the normal adult human central nervous system differs by up to one order of magnitude. *Acta Neuropathol* 2001; 101: 249-255.
- 38 Ji KA, Eu MY, Kang SH, et al. Differential neutrophil infiltration contributes to regional differences in brain inflammation in the substantia nigra pars compacta and cortex. *Glia* 2008; 56: 1039-1047.
- 39 Kanaan NM, Kordower JH, Collier TJ. Age and region-specific responses of microglia, but not astrocytes, suggest a role in selective vulnerability of dopamine neurons after 1-methyl-4-phenyl-1,2,3,6-tetrahydropyridine exposure in monkeys. *Glia* 2008; 56: 1199-1214.
- 40 Banati RB, Gehrmann J, Schubert P, Kreutzberg GW. Cytotoxicity of microglia. *Glia* 1993; 7: 111-118.
- 41 Banati RB, Graeber MB. Surveillance, intervention and cytotoxicity: is there a protective role of microglia? *Dev Neurosci* 1994; 16: 114-127.
- 42 Raivich G, Banati R. Brain microglia and blood-derived macrophages: molecular profiles and functional roles in multiple sclerosis and animal models of autoimmune demyelinating disease. *Brain Res Brain Res Rev* 2004; 46: 261-281.
- 43 Jellinck PH, Kaufmann M, Gottfried-Blackmore A, et al. Selective conversion by microglia of dehydroepiandrosterone to 5-androstenediol-A steroid with inherent estrogenic properties. *J Steroid Biochem Mol Biol* 2007; 107: 156-162.
- 44 Nimmerjahn A, Kirchhoff F, Helmchen F. Resting microglial cells are highly dynamic surveillants of brain parenchyma in vivo. *Science* 2005; 308: 1314-1318.
- 45 Sierra A, Gottfried-Blackmore A, Milner TA, et al. Steroid hormone receptor expression and function in microglia. *Glia* 2008; 56: 659-674.
- 46 Cagnin A, Brooks DJ, Kennedy AM, et al. In-vivo measurement of activated microglia in dementia. *Lancet* 2001; 358: 461-467. Erratum in: *Lancet* 2001; 358: 766.
- 47 Cagnin A, Myers R, Gunn RN, et al. In vivo visualization of activated glia by [<sup>11</sup>C] (R)-PK11195-PET following herpes encephalitis reveals projected neuronal damage beyond the primary focal lesion. *Brain* 2001; 124: 2014-2027.
- 48 Cagnin A, Rossor M, Sampson EL, et al. In vivo detection of microglial activation in frontotemporal dementia. *Ann Neurol* 2004; 56: 894-897.
- 49 Banati RB. Brain plasticity and microglia: is transsynaptic glial activation in the thalamus after limb denervation linked to cortical plasticity and central sensitisation? *J Physiol Paris* 2002; 96: 289-299.
- 50 Banati RB. Neuropathological imaging: in vivo detection of glial activation as a measure of disease and adaptive change in the brain. *Br Med Bull* 2003; 65: 121-131.
- 51 Hickie C, Hickie I, Silove D, et al. Delayed-type hypersensitivity skin testing: normal values in the Australian population. *Int J Immunopharmacol* 1995; 17: 629-634.
- 52 Bumke O. The dissolution of dementia praecox. *Hist Psychiatry* 1993; 4: 129-139. [Translation of: Die auflösung der dementia praecox. *Klin Wochenschr* 1932; 3: 437-440.]

(Received 18 Jul 2008, accepted 12 Nov 2008)

